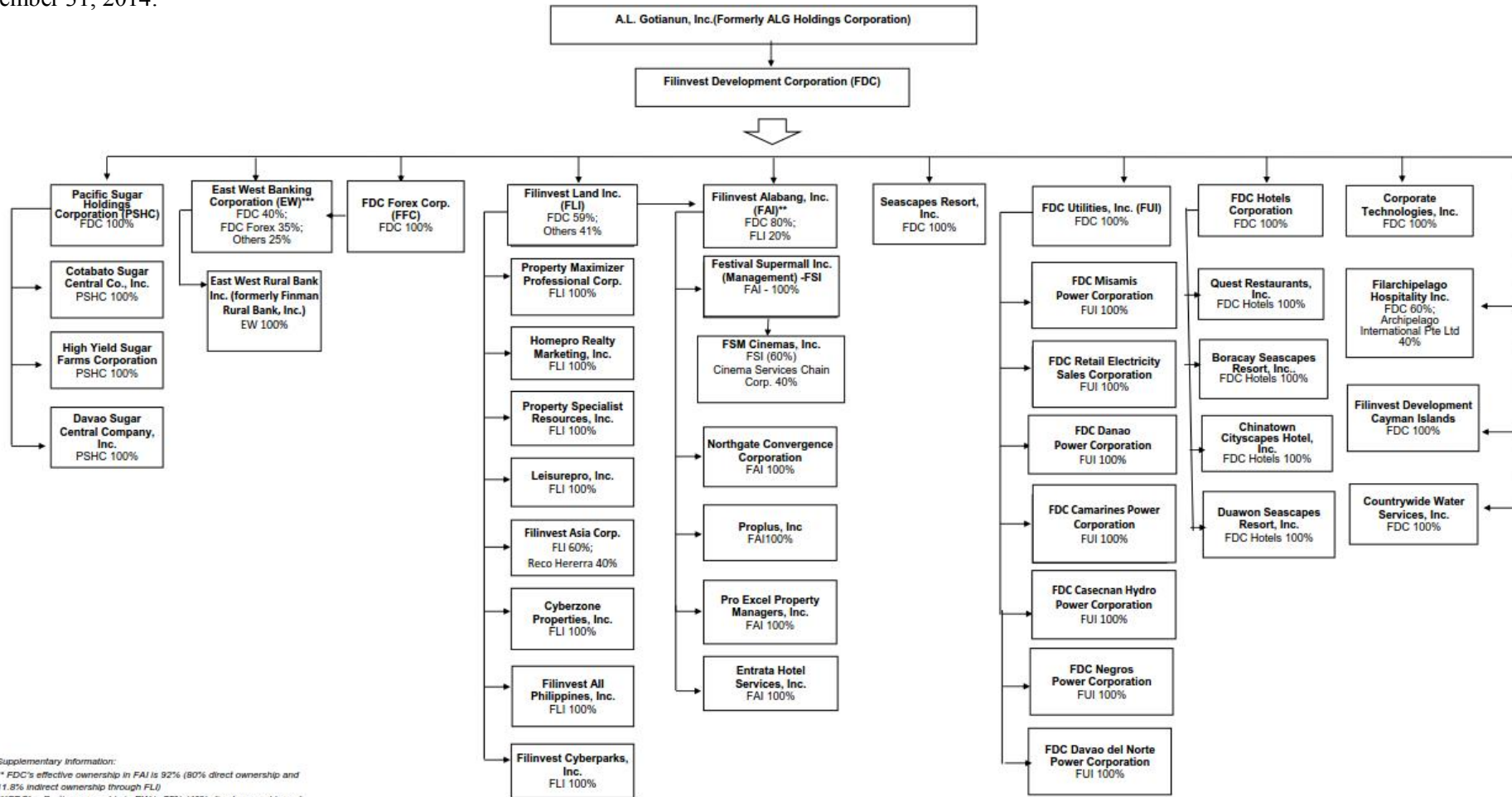


ANNEX III EAST WEST BANKING CORPORATION AND SUBSIDIARIES

CONGLOMERATE MAP AS OF DECEMBER 31, 2014

Below is a map showing the relationship between and among the Group and its ultimate parent company, subsidiaries, and affiliate as of December 31, 2014:



Supplementary Information:
 ** FDC's effective ownership in FAI is 92% (80% direct ownership and 11.8% indirect ownership through FLI)
 ***FDC's effective ownership in EW is 75% (40% direct ownership and 35% indirect ownership through FFC)

