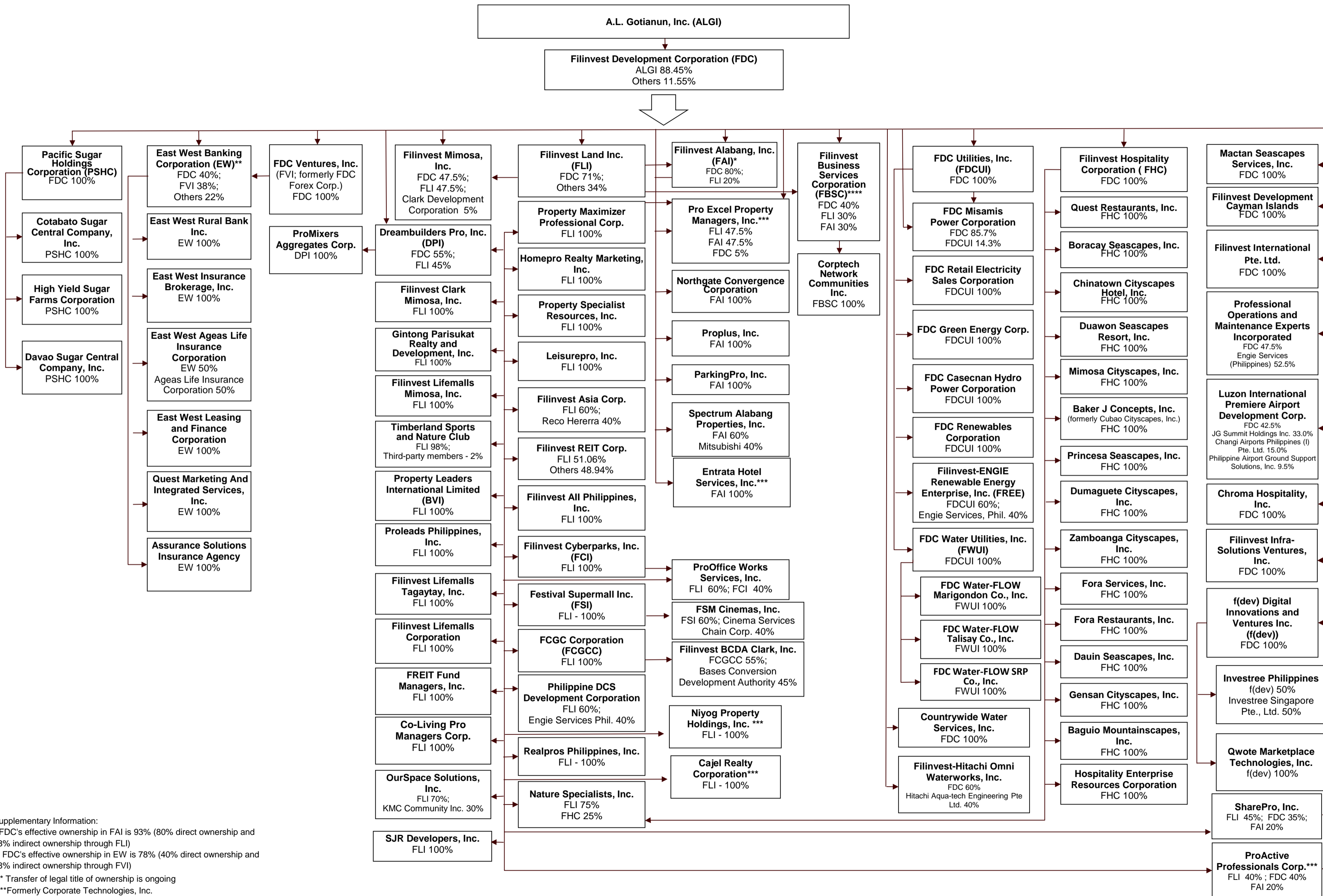


**A.L. GOTIANUN, INC.**

**MAP SHOWING THE RELATIONSHIP BETWEEN AND AMONG THE COMPANIES IN THE GROUP, ITS ULTIMATE PARENT, CO-SUBSIDIARIES, JOINT VENTURES AND ASSOCIATES**

(As of December 31, 2024)



Supplementary Information:

\* FDC's effective ownership in FAI is 93% (80% direct ownership and 13% indirect ownership through FLI)

\*\* FDC's effective ownership in EW is 78% (40% direct ownership and 38% indirect ownership through FVI)

\*\*\* Transfer of legal title of ownership is ongoing

\*\*\*\*Formerly Corporate Technologies, Inc.